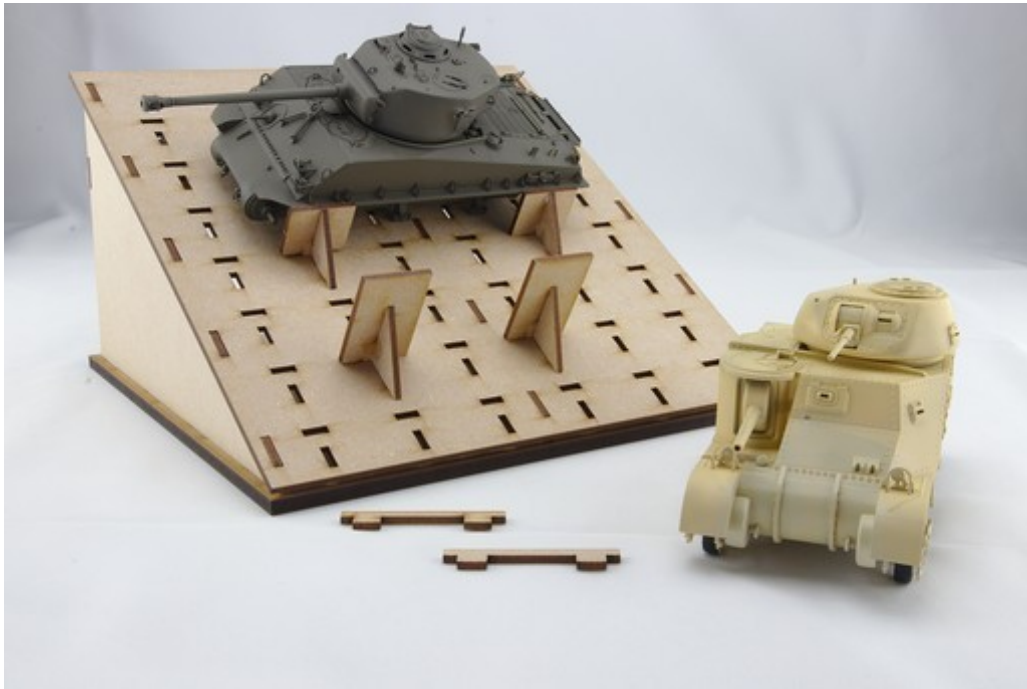


AFV Painting & Weathering Stand

Construction Instructions

www.ebmahobby.co.uk



Introduction

The EBMA tools are produced in a combination of 3mm and 6mm MDF. As such normal DIY woodwork procedures can be applied to them. The parts are cut by a laser cutter which results in smoke marks on the surface of the wood. One side of the wood will have slight marks and the other will be more pronounced. Some parts are symmetrical and you are therefore able to choose the visual effect you wish. For asymmetrical parts if you wish to remove the smoke marks then fine sandpaper may be used (use a sanding block, not just the paper on its own).

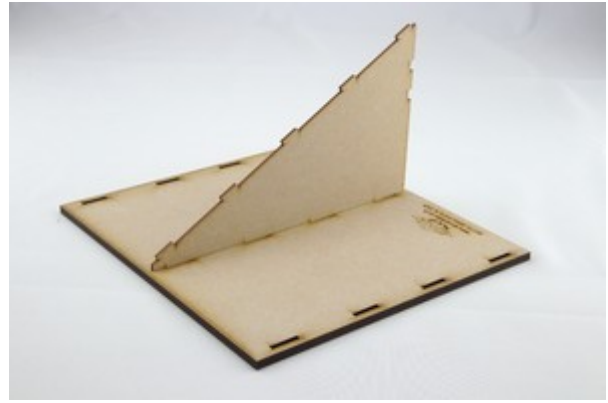
Where glue is required during assembly a good quality wood glue (PVA) should be used. When wiping the excess away wherever possible wipe it towards the burnt edge as this marks less.

Dry fitting components prior to gluing is highly recommended, i.e. compulsory! You should also use an engineers' square during construction to ensure that everything goes together absolutely square.

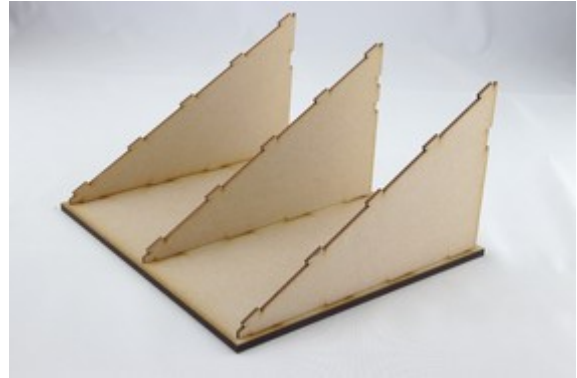
Whilst parts are drying it can be handy to hold them in place with masking tape. This can be used to help keep gaps closed.

Construction

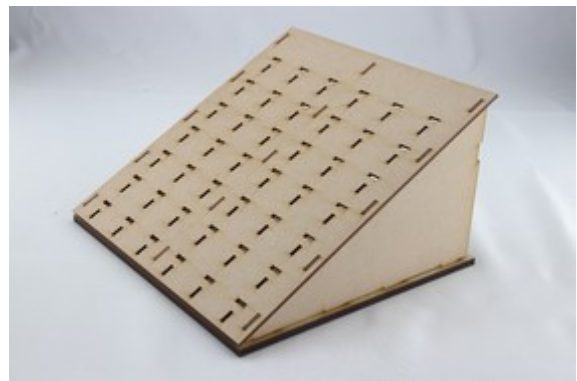
1. Glue and insert the central vertical into the base. The central vertical has two cut outs in the rear edge



2. Glue and insert the two outer verticals.



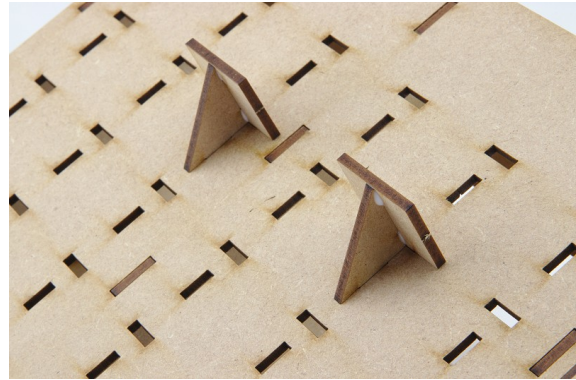
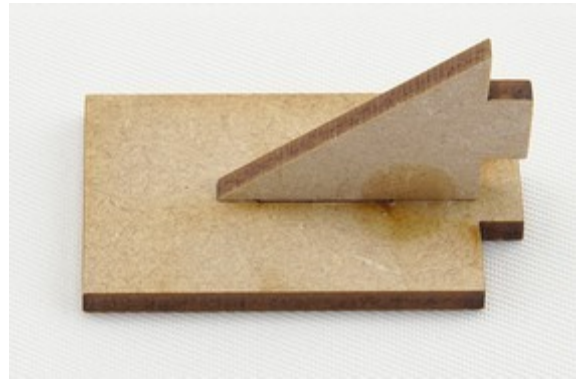
3. Locate and glue the peg board to the verticals. The blank strip should be to the top of the board.



4. Glue the bracing strip to the rear of the stand.
Leave to dry.



5. Glue the uprights together. Making sure that there is no glue on the lower surfaces insert each upright into the peg board and leave to dry.



6. From the strip of neoprene cut four squares and apply these to the base. These should stop the stand sliding across the workbench.



7. The stand is now ready for use.

