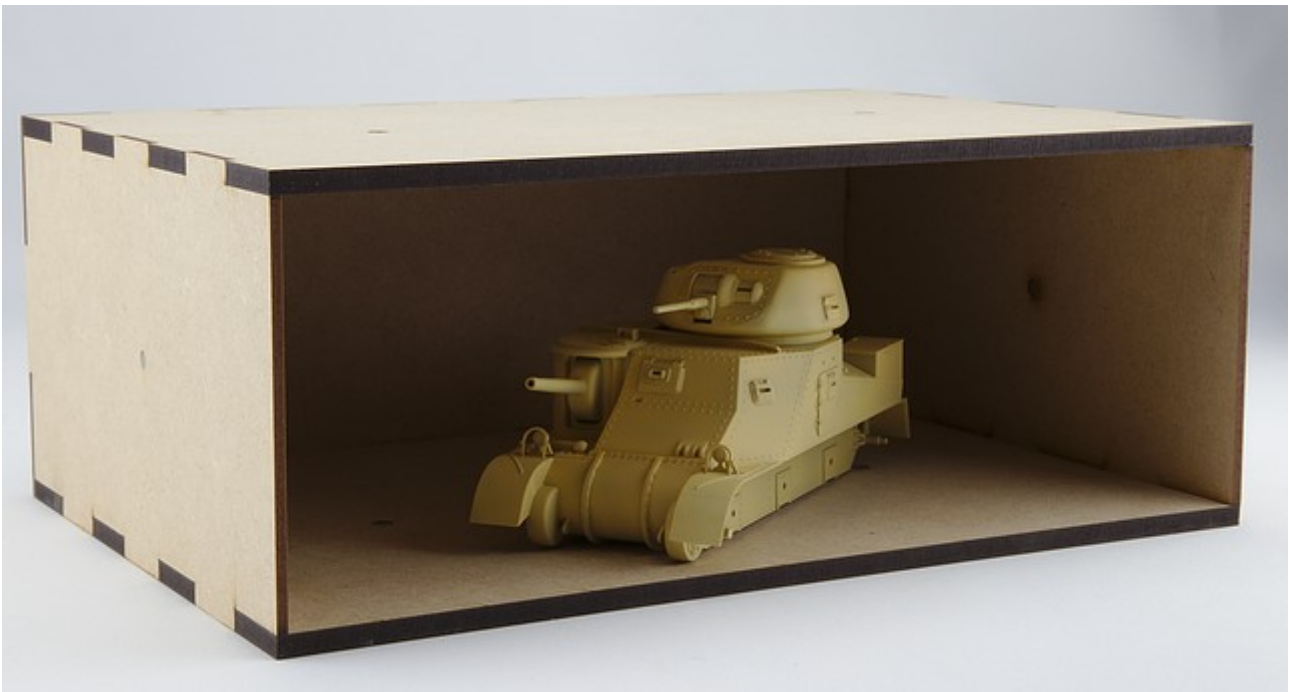


215mm Single Height Storage and Display Unit

Construction Instructions

www.ebmahobby.co.uk







Introduction

The EBMA Modular Storage Units are produced in a combination of 3mm and 6mm MDF. As such normal DIY woodwork procedures can be applied to them. The parts are cut by a laser cutter which results in smoke marks on the surface of the wood. One side of the wood will have slight marks and the other will be more pronounced. Some parts are symmetrical and you are therefore able to choose the visual effect you wish. For asymmetrical parts if you wish to remove the smoke marks then fine sandpaper may be used (use a sanding block, not just the paper on its own).

Where glue is required during assembly a good quality wood glue (PVA) should be used. When wiping the excess away wherever possible wipe it towards the burnt edge as this marks less.

Dry fitting components prior to gluing is highly recommended, i.e. compulsory! You should also use an engineers' square during construction to ensure that everything goes together absolutely square.

Construction

<p>1. Position the 3mm magnets into the side panels and the 6mm magnets into the top and base. Remember the polarity of the magnets.</p>	
<p>2. Glue the rear onto the base. Ensure that it is fully home and at right angles to the base.</p>	
<p>3. Glue the right hand side on.</p>	
<p>4. Glue the left side on.</p>	
<p>5. Glue the top on.</p>	
<p>6. The shell is complete and ready for the drawers.</p>	